

HPS - SP2 Spray Part A & Part B

MMA 1:1 Spray

Product Type: 1:1 Spray, Methyl Methacrylate (MMA)
Product Codes: CAPSP2100, CAPSP2210, CAPSP2300, CAPSP2400,
CAPSP2501, CAPSP2602, CAPSP2603
Product Colors: White, EF Yellow
EF Green, EF Bus Lane Red, EF Red, EF Blue, EF Black,
EF Kiwi Green on request
Description: HPS SP2 Spray 1:1 (Part A and Part B)
Effective Date: Nov 2018

Product Description:

HPS SP2 Spray is a multi component 1:1 ratio sprayable MMA product designed for long line and transverse line pavement marking applications where durability is required. HPS – SP2 Spray offers fast, reliable cure times, even in cool temperatures and provide outstanding adhesion to both concrete and asphalt.

HPS SP2 Spray (part A and B) are applied as a 1:1 mixed ratio via two crossed spray fans. This 100% solids high build product installs at build thicknesses between 350um and 1500um through the use of a push cart or specialized automated equipment.

HPS SP2 Spray pavement marking is versatile and can be used to replace traditional markings in long line and hand stencil applied applications using specially designed 1:1 spray machines.

Product Advantages:

- **Easy to use.** Can be pre-catalyzed prior to arriving at job site so no handling of EF BPO Hardener on the job site.
- **UV Stable.** Uses color stable pigments and resins that reduce fading of markings.
- **Fast dry.** Minimize downtime and application costs.
- **Multi use application.** Recommended for streets, highways, crosswalks, symbols & legends.
- **Adhesion.** Tenacious adhesion to asphalt and concrete substrates.

Packaging:

HPS SP2 Spray is available in 20kg pails. The product must be used with the Ennis Flint recommended EF BPO Hardener to provide lasting performance.

Storage:

Keep cool in a dry covered protected area between 5°C – 35°C out of direct sunlight.

Catalyst Recommendations:

Ennis-Flint recommends using 3% EF BPO Hardener by weight of catalyst addition to Part B only based to total mixed KG (1.2kg of BPO in 20kg part B) in all acceptable surface temperature ranges between 15°C and 40°C. Using less catalyst will increase cure times and possibly negatively impact the success of the application.

Coverage:

Min 0.53kg/m² for 350um Dry/Wet Film Thickness.

Coverage rates will vary based on type of surface and texture.

Safety & Transport:

Refer to Safety Data Sheet (SDS)

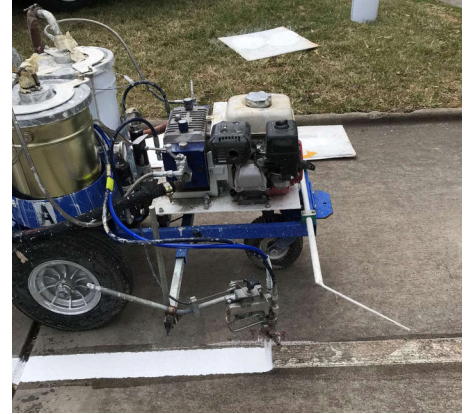


ENNIS TRAFFIC SAFETY SOLUTIONS PTY LTD ABN 34 064 325 631
29-31 Memorial Avenue, Ingleburn NSW 2565 Ph: +61 2 98294275
9 Akatea Road Glendene Auckland 0602 Ph: +64 9 818 6410

enquiry@ennisflint.com.au

www.ennisflint.com.au

PRODUCT DATA



Physical Characteristics:

Density (kg/ltr)	1.50-1.60kg/L
Total Solids (%weight)	>99% (cured)
VOC	<1g/L
Pot Life	<10mins
Cure/No Track Time	<20mins*
Hardness (Shore D)	50 Min
Skid Resistance	≥ 45 bpn
Chemical Resistance	(refer chemical resistance chart)
Luminance	White: >80

*Using EF BPO Hardener at 2% by weight and applied at 25°C ambient conditions.

Limitations:

- Contact Ennis-Flint when road and/or ambient temperatures are below 15°C
- Do not apply when temperatures are near, or below the dew point
- Do not apply if the surface is not completely dry
- P2 Concrete Primer is required prior to application to any concrete surface
- Please contact your E/F sales representative for further information relating to the use and limitations of this product

The product data offered herein is, to the best of our knowledge, true and accurate, but all recommendations are made without warranty, expressed or implied. Because the conditions of use are beyond our control, neither Ennis-Flint nor its agents shall be liable for any injury, loss or damage, direct or consequential, arising from the use or the inability to use the product described herein. As Ennis-Flint has neither control over the installation of product described herein nor control of the environmental factors the installed markings are subjected to, there is no guarantee as to the durability or the retroreflective properties of any marking system applied. No person is authorized to make any statement or recommendation not contained in the Product Data, and any such statement or recommendation, if made, shall not bind the Corporation. Further, nothing contained herein shall be construed as a recommendation to use any product in conflict with existing patents, and no license under the claims of any patent is either implied or granted.

HPS - SP2 Spray Part A & Part B

MMA 1:1 Spray

PRODUCT DATA

TRANSPORT AND STORAGE

GHS

DG



UN No: **1263**
Hazchem Code: **+3YE**
DG Class: **3**
Subsidiary Risk: **None**
Packing Group: **II**
Poisons Schedule: **S6**

Important: Please read the complete **Safety Data Sheet** and any precautions on the product label before use. **Safety Data Sheet** is available on the Ennis Flint website ennisflintapac.com.au



Scan this image
for easy access to Safety Data Sheet

HEALTH AND SAFETY

PRECAUTIONS FOR USE



Appropriate engineering controls:

Local Exhaust Ventilation recommended.

Glasses:

Consider chemical goggles.

Gloves:

1.TEFLON 2.PE/EVAL/PE 3.PVA

Respirator:

Type AK-P Filter of sufficient capacity. (AS/NZS 1716 & 1715, EN 143:2000 & 149:2001, ANSI Z88 or national equivalent)

Storage and Transportation:

Store in cool, dry, protected area. Restrictions on Storage apply. Refer to Full Report. Use only in well ventilated areas. Take precautionary measures against static discharges. Dispose of this material and its container at hazardous or special waste collection point. Keep out of reach of children. Keep container in a well ventilated place. Keep away from food, drink and animal feeding stuffs. Keep away from sources of ignition. No smoking

Fire/Explosion Hazard:

HIGHLY FLAMMABLE. Toxic smoke/fumes in a fire. Use only in well ventilated areas. Take precautionary measures against static discharges. Dispose of this material and its container at hazardous or special waste collection point. In case of fire and/or explosion, DO NOT BREATHE FUMES

FIRST AID

Swallowed:

If more than 15 mins from Doctor, INDUCE VOMITING (if conscious).

Eye:

Wash with running water.

Skin:

Remove contaminated clothing. Wash with soap & water.

Inhaled:

Fresh air. Rest, keep warm. If breath shallow, give oxygen. Medical attention.

Advice To Doctor:

Treat symptomatically.

Fire Fighting:

Keep containers cool. Foam.

Spills and Disposal:

Eliminate ignition sources. Consider evacuation. Prevent from entering drains. Contain spillage by any means. Absorb with dry agent. Stop leak if safe to do so. Use only in well ventilated areas. Take precautionary measures against static discharges. Dispose of this material and its container at hazardous or special waste collection point. This material and its container must be disposed of in a safe way. To clean the floor and all objects contaminated by this material, use water and detergent

Poisons Information Centre: Australia 131 126; New Zealand 0 800 764 766



ENNIS TRAFFIC SAFETY SOLUTIONS PTY LTD ABN 34 064 325 631
29-31 Memorial Avenue, Ingleburn NSW 2565 Ph: +61 2 98294275
9 Akatea Road Glendene Auckland 0602 Ph: +64 9 818 6410

enquiry@ennisflint.com.au

www.ennisflint.com.au

©2018 Ennis-Flint

All Rights Reserved

Page 2 of 2

The product data offered herein is, to the best of our knowledge, true and accurate, but all recommendations are made without warranty, expressed or implied. Because the conditions of use are beyond our control, neither Ennis-Flint nor its agents shall be liable for any injury, loss or damage, direct or consequential, arising from the use or the inability to use the product described herein. As Ennis-Flint has neither control over the installation of product described herein nor control of the environmental factors the installed markings are subjected to, there is no guarantee as to the durability or the retroreflective properties of any marking system applied. No person is authorized to make any statement or recommendation not contained in the Product Data, and any such statement or recommendation, if made, shall not bind the Corporation. Further, nothing contained herein shall be construed as a recommendation to use any product in conflict with existing patents, and no license under the claims of any patent is either implied or granted.